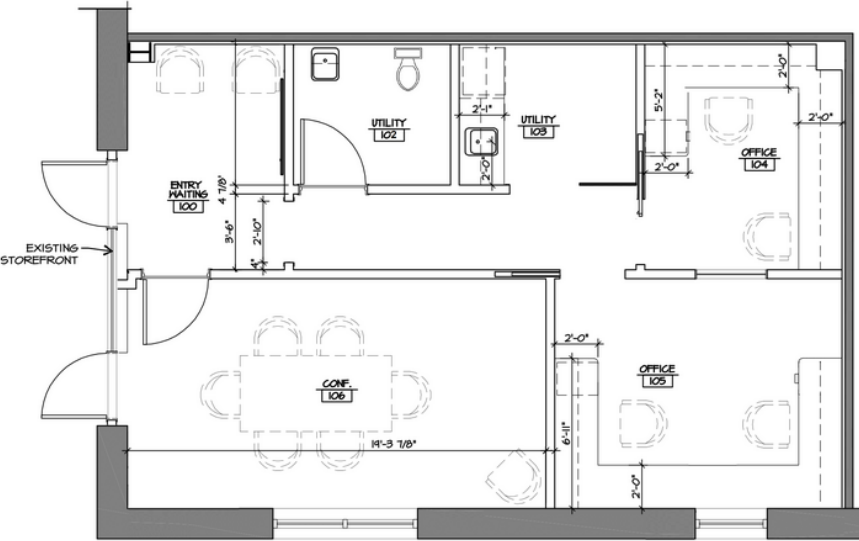




624 New Loudon Road

SITE DETAILS & INFORMATION

- 750 SF of retail/office space available now
- Route 9 visibility
- Lightbox sign
- Direct exterior entrance
- Onsite, responsive, 24/7 property management
- Ample parking
- Meticulously maintained grounds



PARTIAL FIRST FLOOR PLAN
SCALE: 1/4" = 1'-0"

