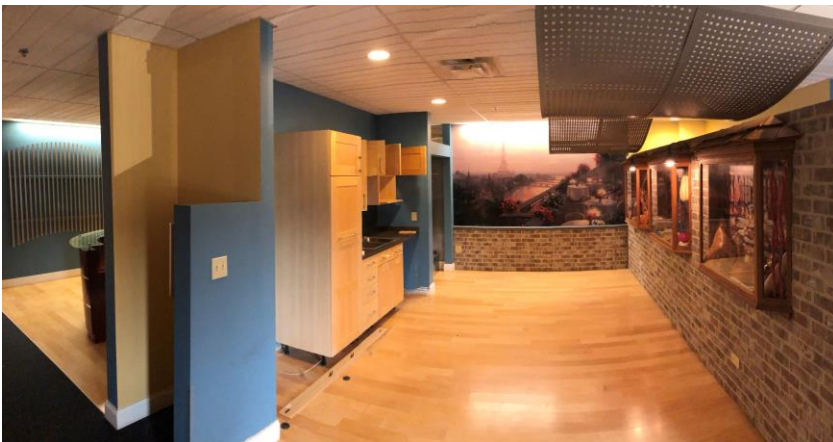


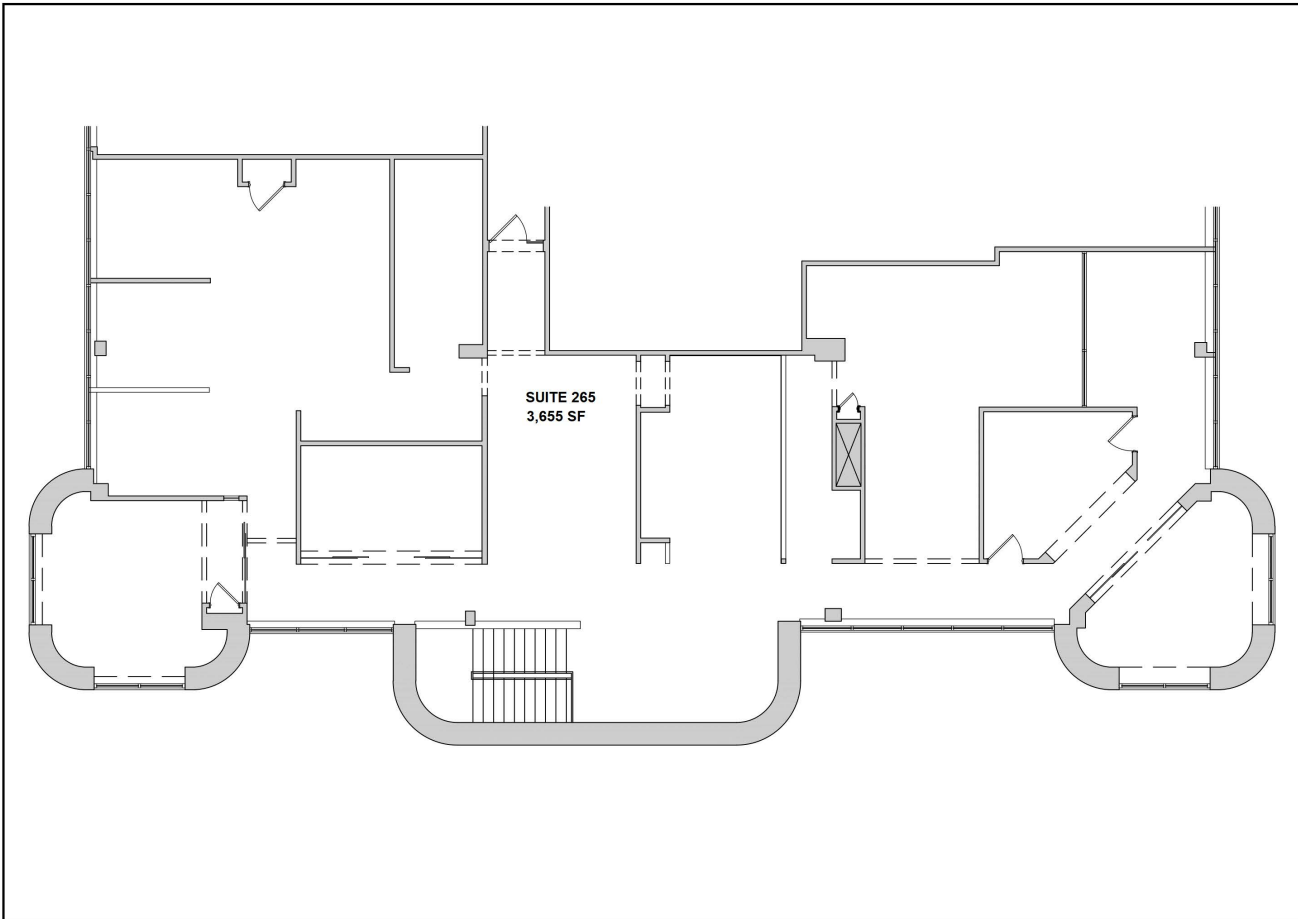
# 4 ATRIUM DRIVE

## Suite 265

### Site Details & Information

- Approximately 3,655 square feet of rentable space available now.
- Second floor office space.
- Public and private entrances.
- Ample parking.
- Meticulously maintained grounds.
- Onsite, responsive property management.
- Proximity to the heart of Albany.
- Within the reputable Executive Woods office park.





**4 ATRIUM DR**  
**SUITE 265**

- **4 private offices**
- **9 workstations/work areas**
- **2 conference rooms**
- **Kitchen/lounge**
- **Private exterior entrance with stairs**