

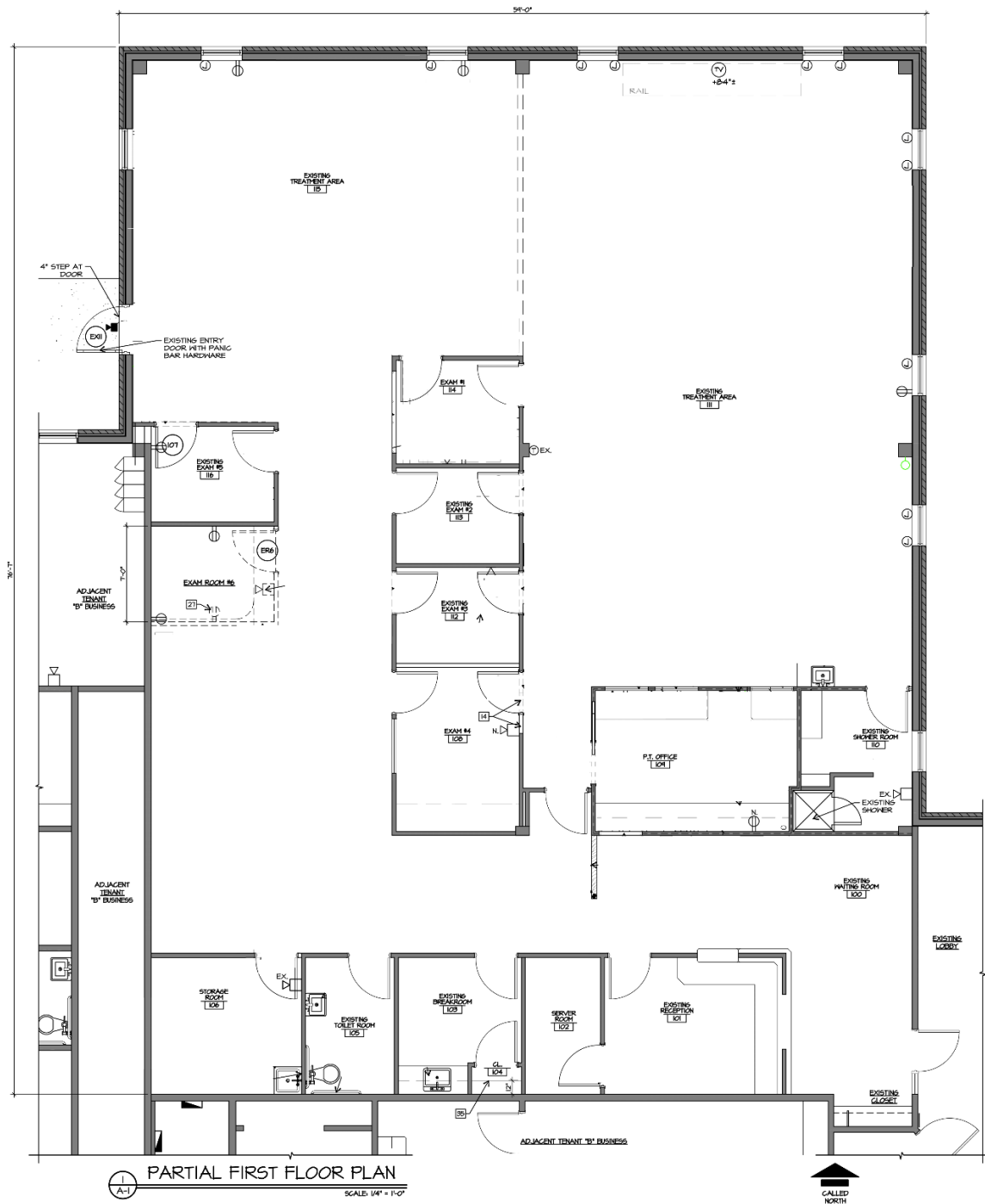
3 ATRIUM DRIVE

Suite 110

Site Details & Information

- Approximately 4,780 square feet of rentable space.
- First floor office space.
- Ample parking.
- Meticulously maintained grounds.
- On-site, responsive property management.
- Proximity to the heart of Albany.
- Within the reputable Executive Woods office park.





- 7 private offices/exam rooms
- Large open work areas
- Ample storage
- Breakroom/kitchen
- Private toilet room